

NOWOŚCI 2019



SUPLEMENT DO KATALOGU



Katarzynki to firma łącząca tradycję z nowoczesnością, która podczas już swojej prawie 30-letniej działalności na rynku zarówno na płaszczyźnie produktowej jak i lokalizacyjnej ukazała jak wiele potrafi zrobić by dostosować swoją ofertę do zmieniających się potrzeb rynku.

To razem z Państwem i dzięki Państwa współpracy przeszliśmy drogę od tradycyjnego wtrysku tworzywa przez obróbkę skrawaniem metalu po zdobnictwo wykończeniowe. Wszystkie te działy naszej produkcji powstały w wyniku zmieniających się oczekiwań ze strony projektantów i technologów współpracujących z nami firm. Jednak poszerzenie oferty produktowej to nie jedyny nasz krok za rozwijającym się rynkiem. Stworzyliśmy szereg podwydziałów w naszej firmie, które mają na celu zwiększenie naszej elastyczności, a co za tym idzie lepszej obsługi Państwa potrzeb.

Ścisłe współpracująca z nami i mieszcząca się na naszym terenie narzędziownia czy też malarnia proszkowa dają nam niezależność, a tym samym lepszą ofertę terminową, którą możemy złożyć na Państwa ręce. Nasz dział projektowo – konstrukcyjny jest gwarantem udanych wdrożeń nowych rozwiązań technologicznych zapewniając najwyższą jakość proponowanego asortymentu. Przedstawiciele handlowi stanowiący natomiast pomost między Państwem, a sercem naszej firmy zapewniają stały zasób informacji o potrzebach naszych klientów wnosząc świeżość i inspirując do innowacyjnych rozstrzygnięć wspólnie analizowanych projektów.

Zapraszamy zatem do korzystania z naszej oferty, ale przede wszystkim do składania zapytań na poszukiwane rozwiązania.

Katarzynki is a company uniting tradition with modernity. Katarzynki has shown on the product as well as on localisation level during its almost 30 years of market activity how far we are ready to go in order to adapt our offer to evolving needs of the market.

Together with you and thanks to your cooperation, we have made a route from traditional injection of plastic materials through machining of metals to decorative finishing works. All these departments in our production came into being as a result of evolving expectations on the part of designers and technologists in the firms cooperating with us. However, expanding our product offer is not the only step we take in order to keep abreast with the developing market. We have called into being several sub-departments in our company which are aimed to increase our flexibility and, in consequence, to improve our customer service skills.

The toolroom and the paint room, closely cooperating with us and located upon our own premises, enable us to act and work independently, allowing for a better deadline offer which we can submit to you. Our design & construction department proves as a recipe for successful implementations of new technological solutions by ensuring the highest quality of proposed sortiment. Our sales agents, acting in turn as a bridge between you and the heart of our firm, insure a constant customer feedback, bringing new freshness and inspiration into innovative decisions concerning the projects which we analyze together.

We invite you therefore to take advantage of our offer and above all to send your inquiries concerning desired solutions.



- 30 lat doświadczenia, nowoczesność i innowacyjność,
- 30 wtryskarek, termoformierki, drukarka 3D,
- dział projektowo – wdrożeniowy,

- 30 years of experience, modernity and innovation,
- 30 injection machines, thermoforming machines, 3D-printer,
- designing & implementation department,



- narzędziownia, produkcja form,
- do 3 000 000 elementów metalizowanych i lakierowanych miesięcznie,
- malarnia proszkowa,

- toolroom, manufacture of new injection moulds,
- up to 3 000 000 metallized and varnished pieces every month,
- powder paint shop,



- lakierowanie lakierami UV, rozcieńczalnikowymi,
- dział metalowy,
- magazyn wyrobów gotowych,

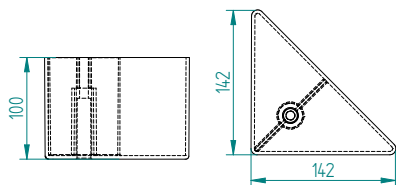
- painting with UV lacquers, diluter lacquers,
- metal department,
- stock room of ready-made products,



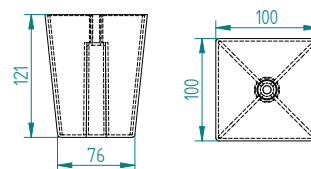
- lasery do cięcia powierzchni płaskich i profili,
- park maszynowy pozwalający na dopasowanie, produkcji do potrzeb i wymagań klienta,
- transport zapewniający dostawy just on time.

- laser equipment for cutting flat surfaces and profiles,
- machine park enabling to adjust our production, to needs and requirements of the customer,
- transport ensuring just-in-time deliveries.

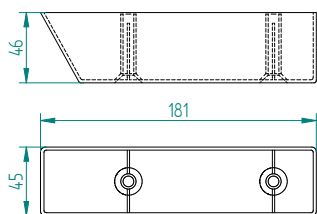
TW-M 1244



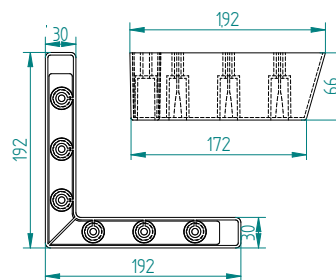
TW-M 1232



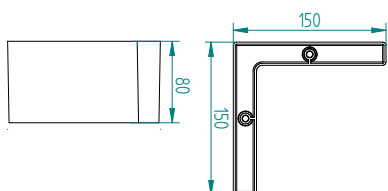
TW-M 1240



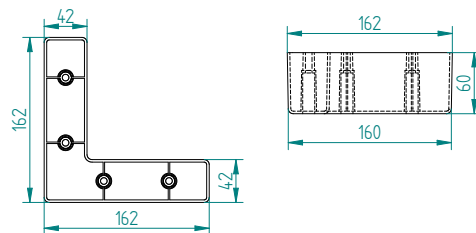
TW-M 1230



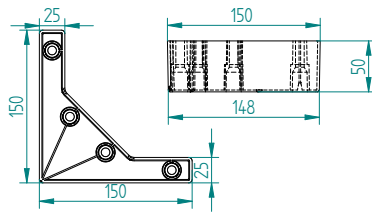
TW-M 1250



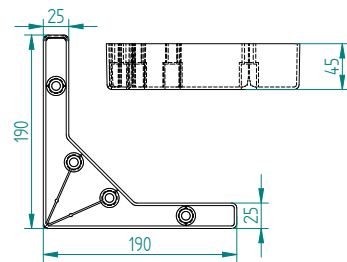
TW-M 1238



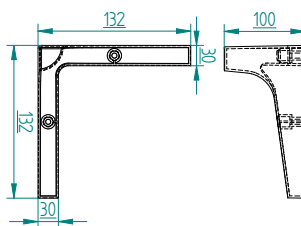
TW-M 1227



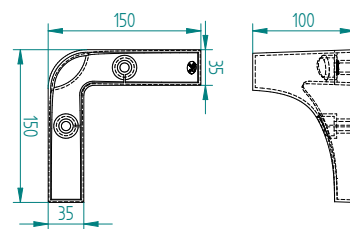
TW-M 1226



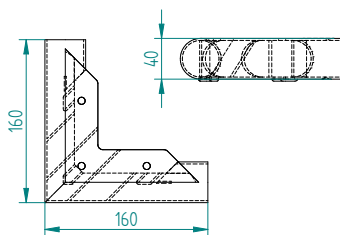
TW-M 1231



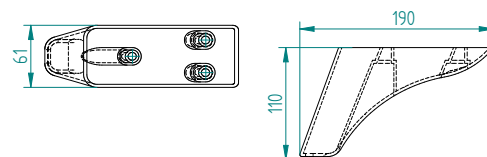
TW-M 1229



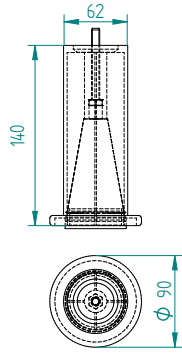
TW-M 1219



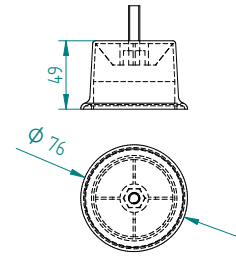
TW-M 1239



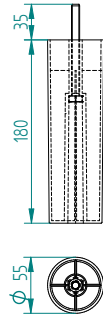
TW-M 1201.04



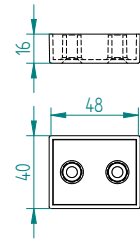
TW-M 1218



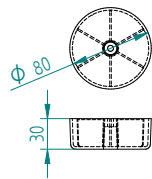
TW-M 1251



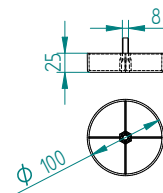
TW-M 1253



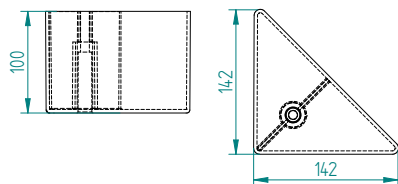
TW-M 1217



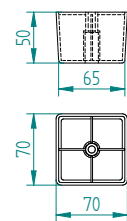
TW-M 1252



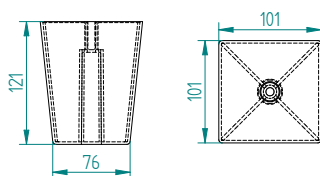
TW 0726



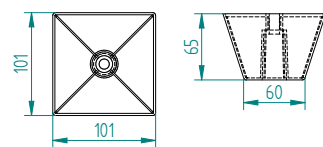
TW 0701



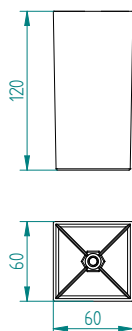
TW 0674



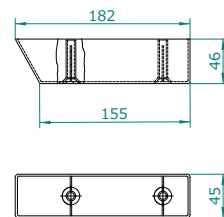
TW 0658



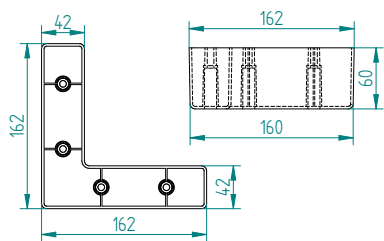
TW 0740



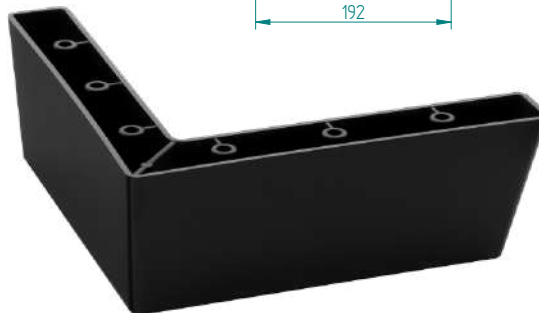
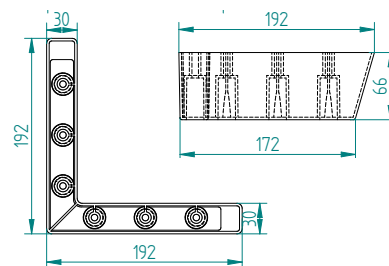
TW 0719



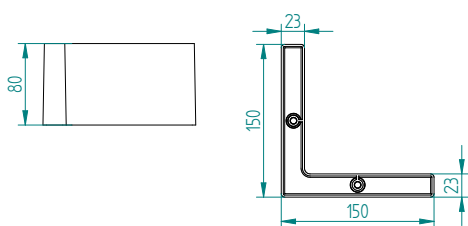
TW 0702



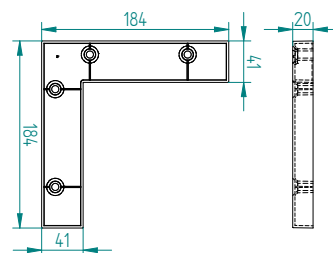
TW 0689



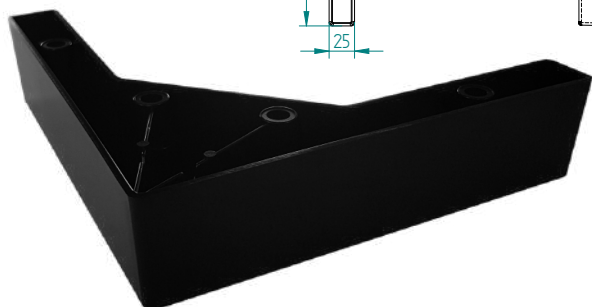
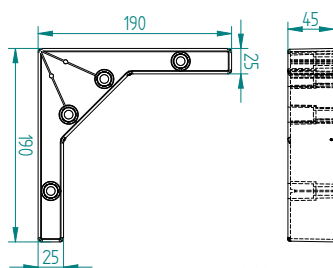
TW 0732



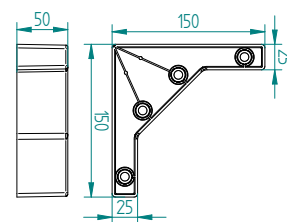
TW 0745



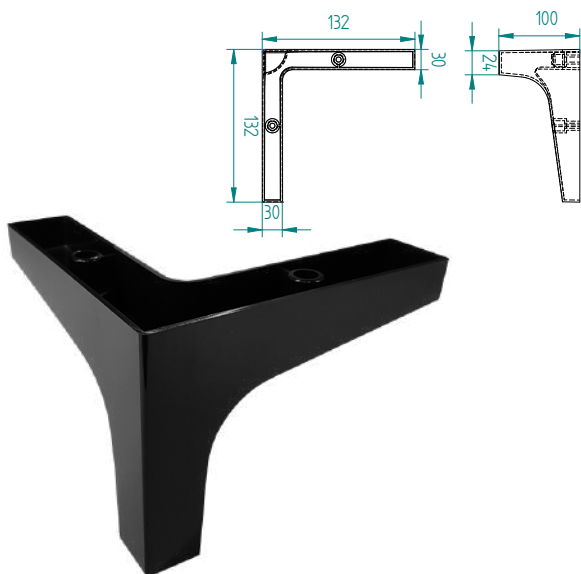
TW 0679



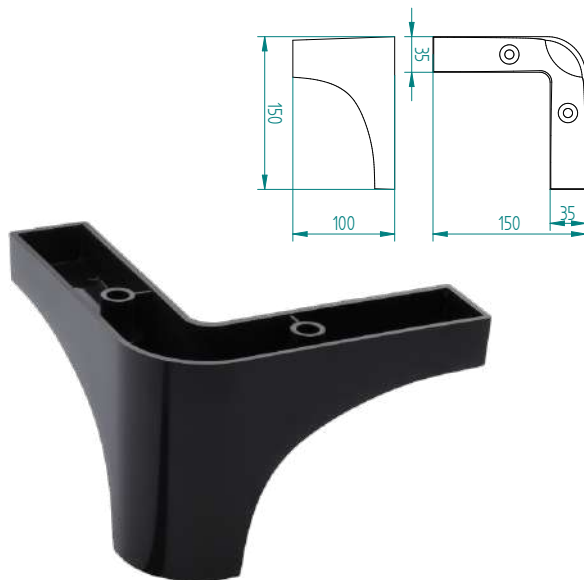
TW 0685



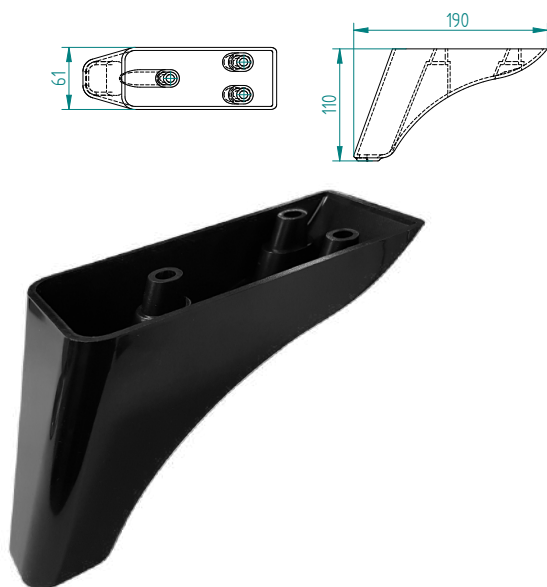
TW 0699



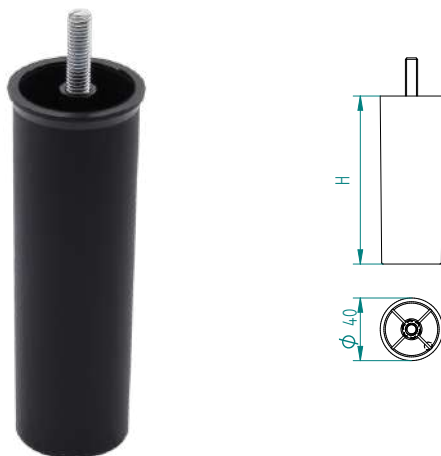
TW 0688



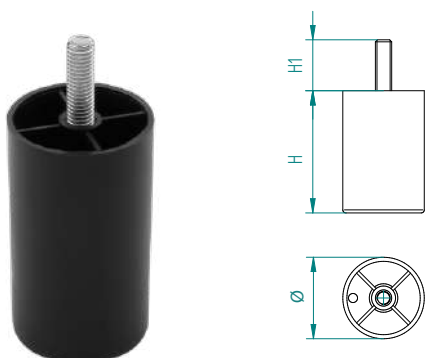
TW 0723



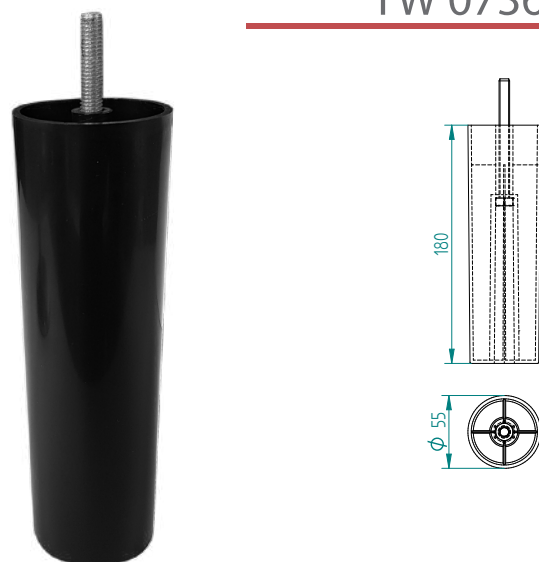
KOD	H
0676	110
0696	130
0697	150
0698	160



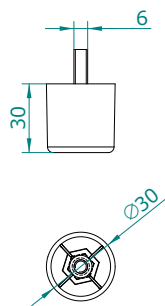
KOD	H	Ø	H1
0693	60	40	25
0694	70	40	25
0730	80	30	30
0675	80	40	25
0695	90	40	25



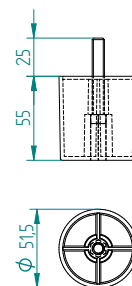
TW 0736



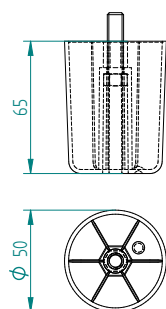
TW 0742



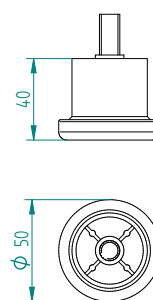
TW 0705



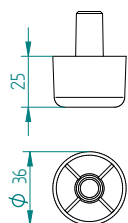
TW 0741



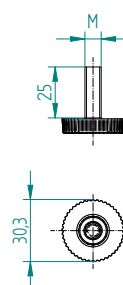
TW 0700



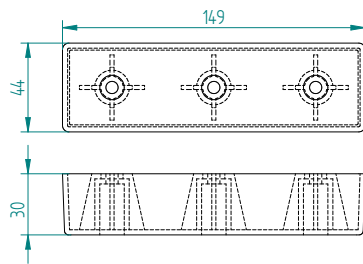
TW 0682



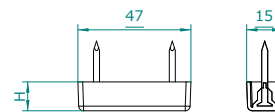
KOD	M
0734	6
0734.01	8
0734.02	10



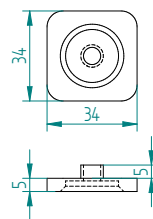
TW 0665



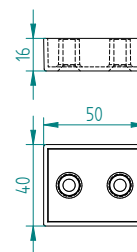
KOD	H
0671	12
0672	6



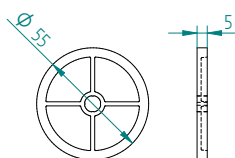
TW 0743



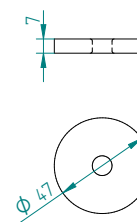
TW 0744



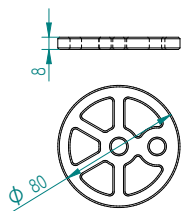
TW 0725



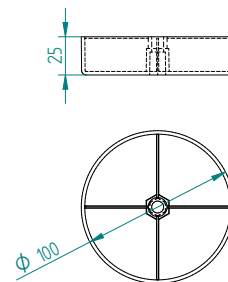
TW 0709



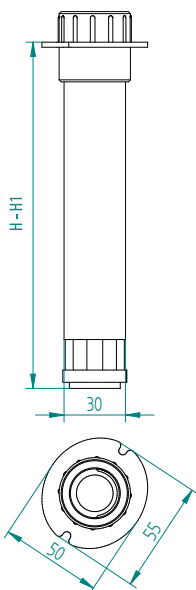
TW 0655



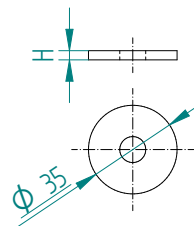
TW 0737.00



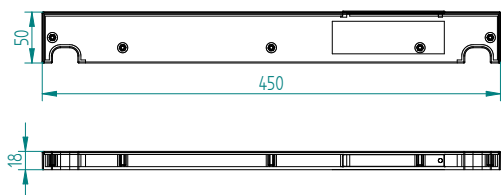
KOD	H	H1
0692	170	280
0692.01	130	230



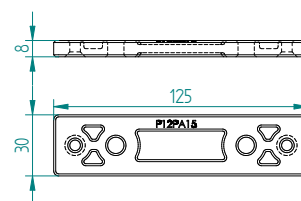
KOD	H
0111.02	10
0111.03	20



TW 0575

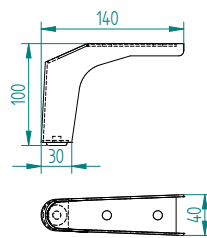


TW 0654

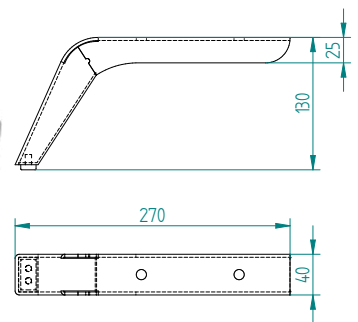




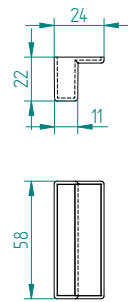
ST 3966.02



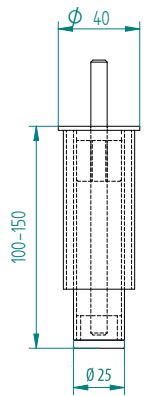
ST 3821



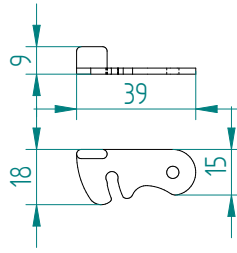
TW 0714



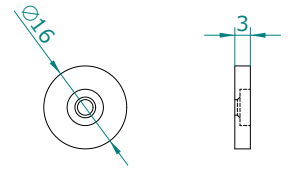
ST 3D49.01



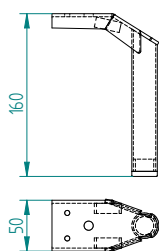
TW 0704



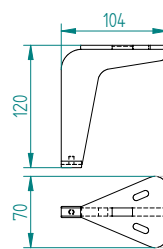
TW 0715



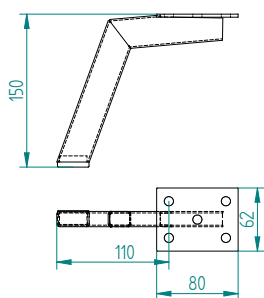
ST 3C12



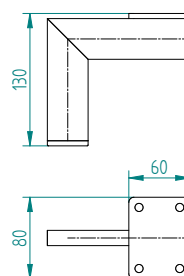
ST 3C40.67



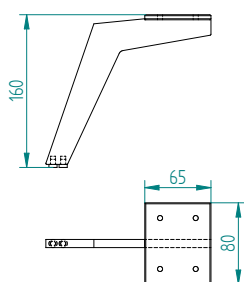
ST 3D11



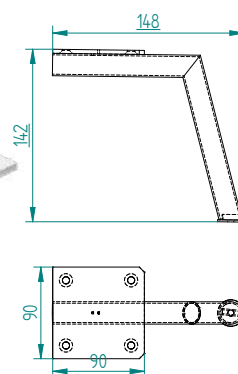
ST 3A37



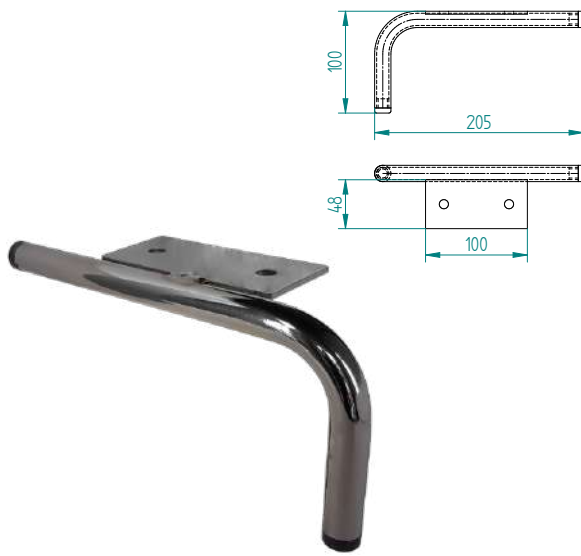
ST 3961.04



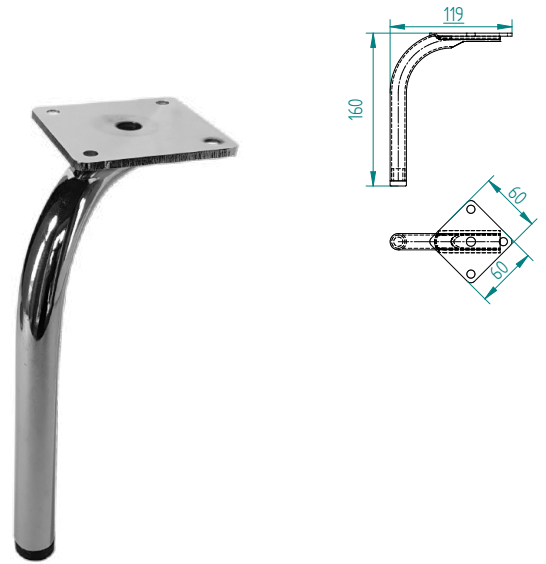
ST 3903.031



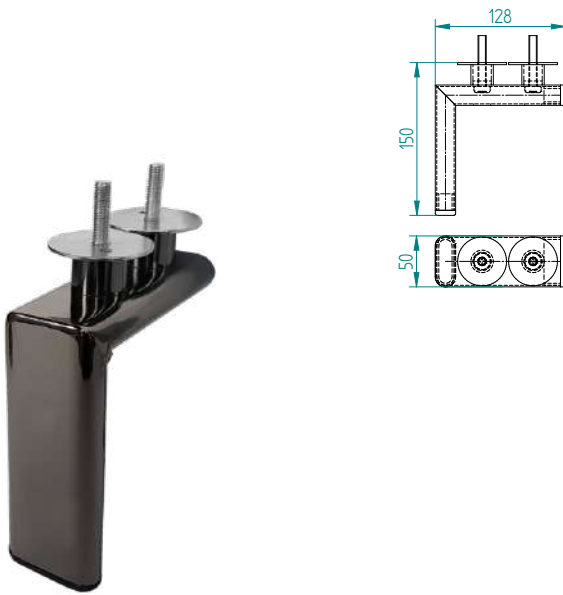
ST 3C18.02



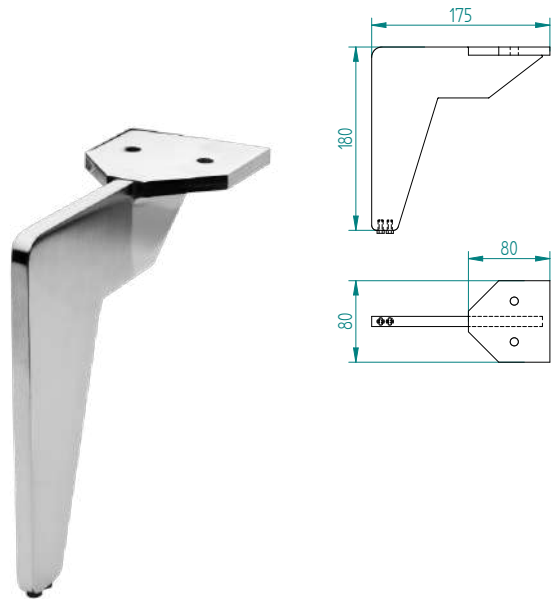
ST 3C74.01



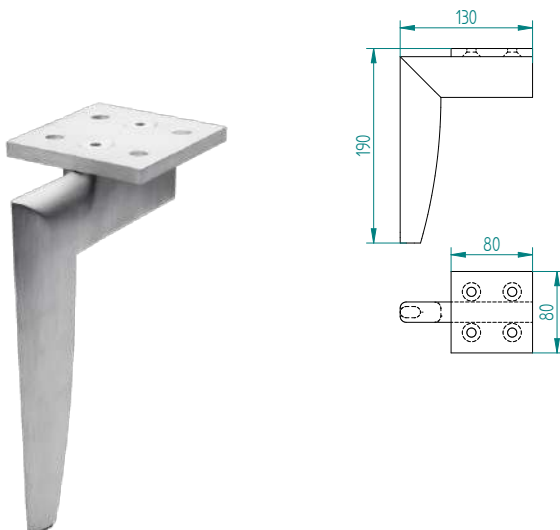
ST 3C83.01



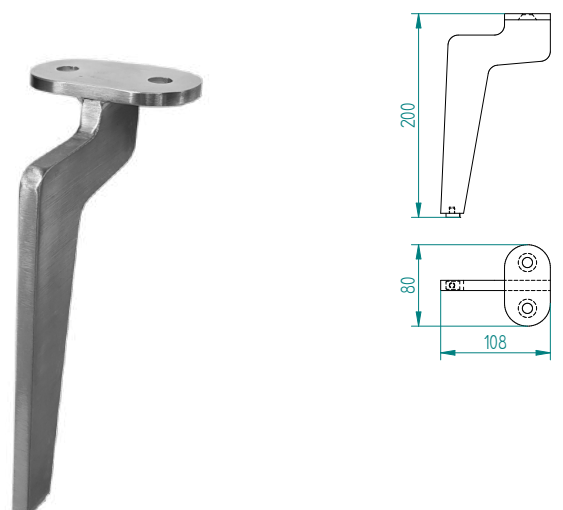
ST 3968



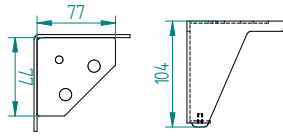
ST 7933



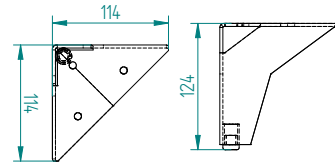
ST 3B71



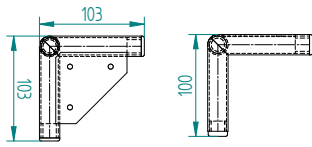
ST 3935



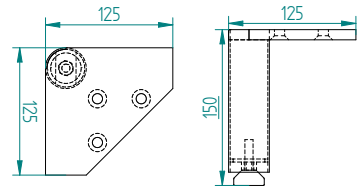
ST 3A40.12



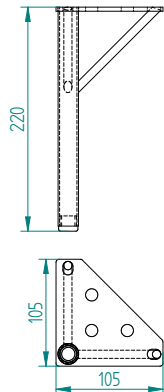
ST 3A89.01



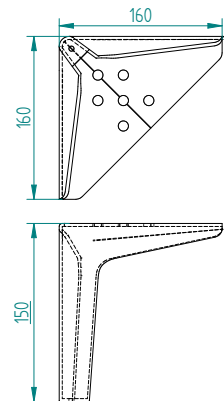
ST 3A32.01



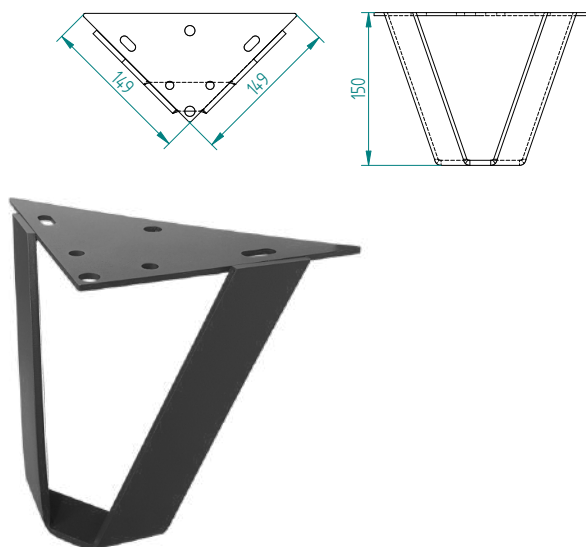
ST 3A07.01



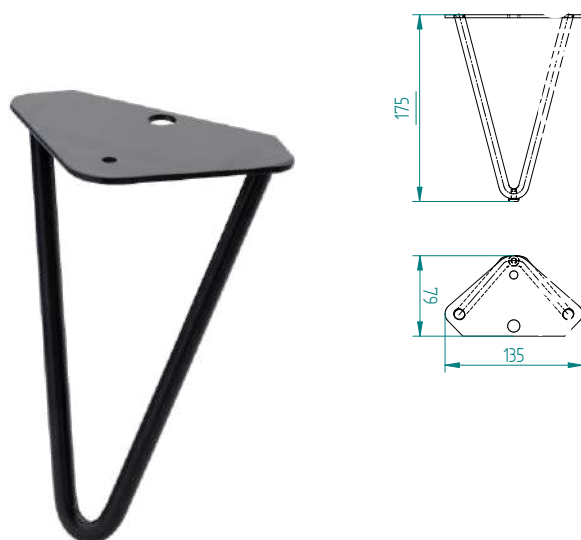
ST 3D24.01



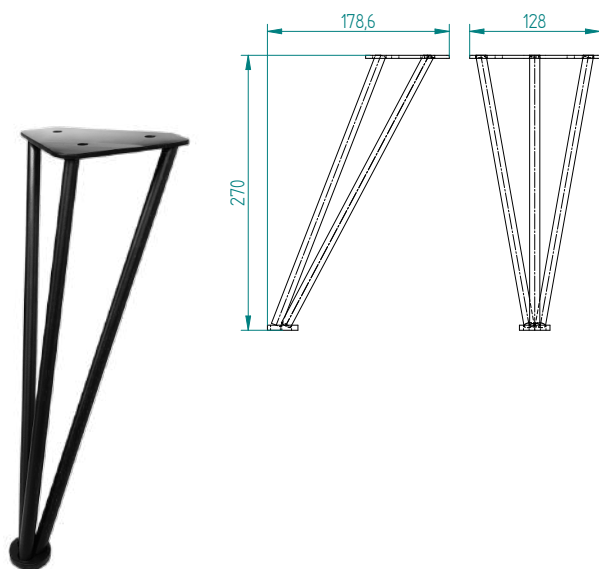
ST 3A36.01



ST 3B04.10



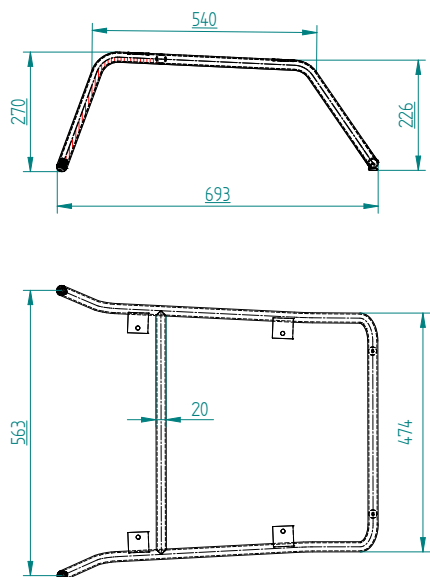
ST 3B81

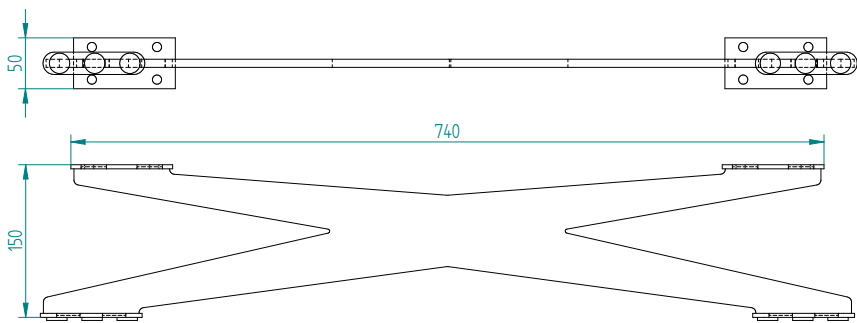


ST 3831



ST 3B93.04

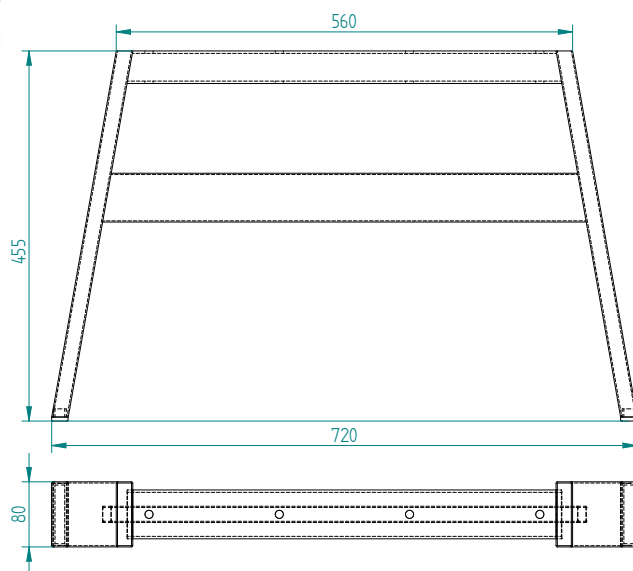




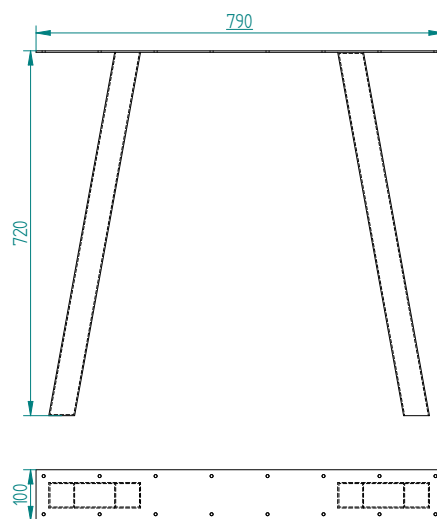
ST 3C30.301



ST 3C28.01

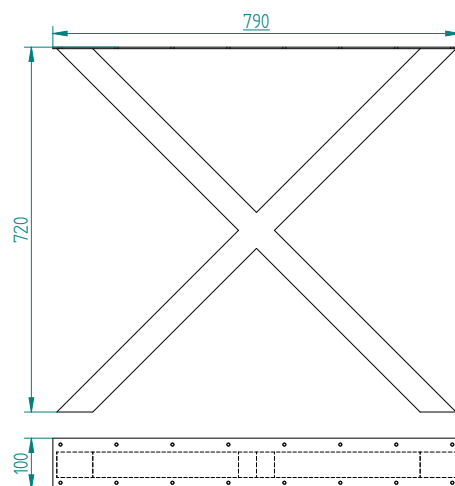


ST 3B26

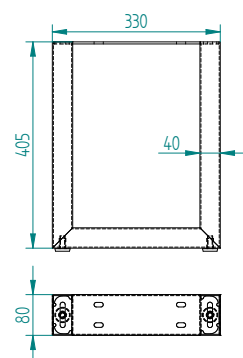




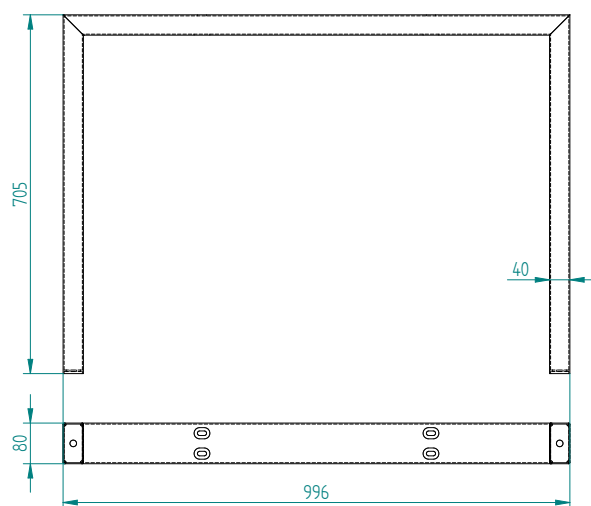
ST 3B27



ST 3771.12



ST 3952.23




INDEX

KOD		str.	pakowanie		KOD		str.	pakowanie		KOD		str.
TW-M	1201.04	4	72	szt	TW	0692	10	70	szt	ST	3A07.01	14
TW-M	1217	4	325	szt	TW	0692.01	10	90	szt	ST	3A32.01	14
TW-M	1218	4	150	szt	TW	0693	7	210	szt	ST	3A36.01	15
TW-M	1219	3	72	szt	TW	0694	7	168	szt	ST	3A37	12
TW-M	1226	3	56	szt	TW	0695	7	126	szt	ST	3A40.12	14
TW-M	1227	3	88	szt	TW	0696	7	243	szt	ST	3A89.01	14
TW-M	1229	3	42	szt	TW	0697	7	162	szt	ST	3B04.10	15
TW-M	1230	2	60	szt	TW	0698	7	162	szt	ST	3B27	17
TW-M	1231	3	80	szt	TW	0699	7	80	szt	ST	3B71	13
TW-M	1232	2	48	szt	TW	0700	8	200	szt	ST	3B81	15
TW-M	1238	2	70	szt	TW	0701	5	250	szt	ST	3B26	16
TW-M	1239	3	72	szt	TW	0702	6	56	szt	ST	3B93.04	15
TW-M	1240	2	144	szt	TW	0704	11	1000	szt	ST	3C12	12
TW-M	1244	2	53	szt	TW	0705	8	448	szt	ST	3C18.02	13
TW-M	1250	2	90	szt	TW	0709	9	1000	szt	ST	3C28.01	16
TW-M	1251	4	112	szt	TW	0714	11	1000	szt	ST	3C30.301	16
TW-M	1252	4	176	szt	TW	0715	11	1000	szt	ST	3C40.67	12
TW-M	1253	4	300	szt	TW	0719	5	144	szt	ST	3C74.01	13
TW	0111.02	10	1000	szt	TW	0723	7	72	szt	ST	3C83.01	13
TW	0111.03	10	1000	szt	TW	0725	9	1000	szt	ST	3D11	12
TW	0575	10	90	szt	TW	0726	5	53	szt	ST	3D24.01	14
TW	0654	10	800	szt	TW	0730	7	216	szt	ST	3D49.01	11
TW	0655	10	800	szt	TW	0732	6	90	szt	ST	3771.12	17
TW	0658	5	80	szt	TW	0734	8	500	szt	ST	3821	11
TW	0665	9	300	szt	TW	0734.01	8	500	szt	ST	3831	15
TW	0671	9	1000	szt	TW	0734.02	8	500	szt	ST	3903.301	12
TW	0672	9	1000	szt	TW	0736	7	112	szt	ST	3935	14
TW	0674	5	48	szt	TW	0737.00	10	256	szt	ST	3952.23	17
TW	0675	7	126	szt	TW	0740	5	108	szt	ST	3961.04	12
TW	0676	7	243	szt	TW	0741	8	384	szt	ST	3966.02	11
TW	0679	6	72	szt	TW	0742	8	385	szt	ST	3968	13
TW	0682	8	800	szt	TW	0743	9	500	szt	ST	7933	13
TW	0685	6	88	szt	TW	0744	9	300	szt			
TW	0688	7	42	szt	TW	0745	6	160	szt			
TW	0689	6	60	szt								

Prezentowana oferta nie stanowi oferty handlowej w rozumieniu Kodeksu Cywilnego. Producent zastrzega sobie prawo do wprowadzenia zmian konstrukcyjnych w oferowanych wyrobach. Kolory przedstawione w katalogu mogą się różnić od rzeczywistych kolorów produkowanych detali. Przedstawione wyroby w katalogu są przedmiotem ochrony.

The presented offer does not represent a commercial offer as defined in the Polish Civil Code. The manufacturer has reserved the right to introduce construction changes in the offered products. The colours as shown in the catalogue may vary from the actual colours of the manufactured items. The products shown in the catalogue are protected.



Zakład Przetwórstwa Tworzyw Sztucznych
Halina Błażejowicz – Sowa
87-200 Wąbrzeźno
Katarzynki 1

KATARZYŃKI Akcesoria Meblowe Sp. z o.o.
87-200 Wąbrzeźno,
Katarzynki 1
Zakład: Ostaszewo 57i,
87-148 Łysomice

www.katarzynki.pl
poczta@katarzynki.pl